

LAMP
SOLAR BENCH

 **INSTRUCTION AND MAINTENANCE MANUAL**



DESCRIPTION

SOLAR BENCH is a precision instrument which has been manufactured in compliance with the highest optical and mechanical features in order to ideally satisfy the daily requirements of the Dental Laboratory.

MAIN FEATURES

Lens :

Diopters	Magnification	Dimensions	Operating distance (focus)
3x + 12x	1 / 4	Ø95mm	80 mm

Roof lamp :

lamps	voltage
40 LED SMD – luce bianchissima (6400° K) 40pcs SMD LEDs – producing extremely white light (6400° K)	220/240 V - 50/60 Hz (6.5W)



OPERATING PROCEDURE

Gently remove the lamp from its packaging. The appliance is equipped with a balanced base to be positioned on the bench, near the working area. The arm features two joints allowing to move the roof lamp and to adjust its height. The joint in the middle of the arm is equipped with a friction adjuster (use the hex key incorporated in the lower part of the lamp base). As ideal place for the installation, choose a well ventilated, clean and dry location, with temperature ranging between 0°C and 40°C and relative humidity not exceeding 90% (indoor use only).

ELECTRICAL CONNECTION

Before connecting the electrical cable, be sure that the rated voltage stated on the label corresponds to the mains voltage and that the socket is duly supplied with earthed wire. The section of the feeding cable supplied with the unit suits to the highest absorbed current (specified in the technical features) and it is one meter long. Should you use any extension, be sure that the section of the cable matches to its length and that it is at least of the same size as the original cable.

OPERATION

The roof lamp is fitted with a protective cover ensuring that the lens is kept clean; the cover must be closed in idle mode. Switch on and true the lamp on the object to be enlarged or lightened, then adjust the focusing by gently lifting or lowering the lamp. Never force the mechanisms and do not try to force the movements of the middle joint; if needed, adjust its friction as explained above. Do not forget to switch off the lamp at the end of the work.



CLEANING OPERATION

Use a soft cloth to clean the lens, eventually use a liquid, antistatic and non-abrasive cleansing agent. The other parts of the lamp can be cleaned with any non-aggressive detergent or disinfectant agent specific for the plastic and the enameled metallic surfaces.

Operations to be avoided: to clean the lens surface with your hands, to misuse and apply unnecessary loads to the arm, to clean the appliance with volatile solvents or abrasive cleansing agents, to try to recondition the lamp by yourselves.

MAINTENANCE

Replacement of the lens – unscrew the 5 screws fixing the transparent plastic screen and lift the LED ring; the lens is now free and can be removed from its seat.

Replacement of the complete LED ring – unscrew the 5 screws fixing the transparent plastic screen, lift the LED ring and unweld the two electric contacts from the printed circuit.

Replacement of the electronic ballast:- unscrew the 4 screws hidden under the supporting feet, unscrew the two screws fixing the plastic case and open it; after replacement of the part, restore all electric connections one by one.

WARNINGS

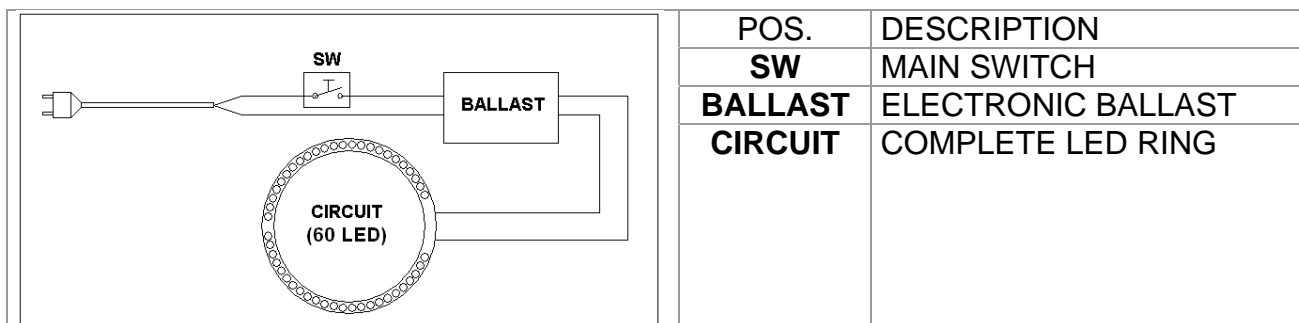
Never use the unit for any use differing from the operating purposes it has been designed for and which are clearly illustrated in the present instruction manual.

In case of demolition, comply scrupulously with the regulations in force in the Country where the operation takes place, always considering that you are handling an electrical device.

Dentalfarm Srl reserves the right to modify at any time and without prior notice any features of its products.

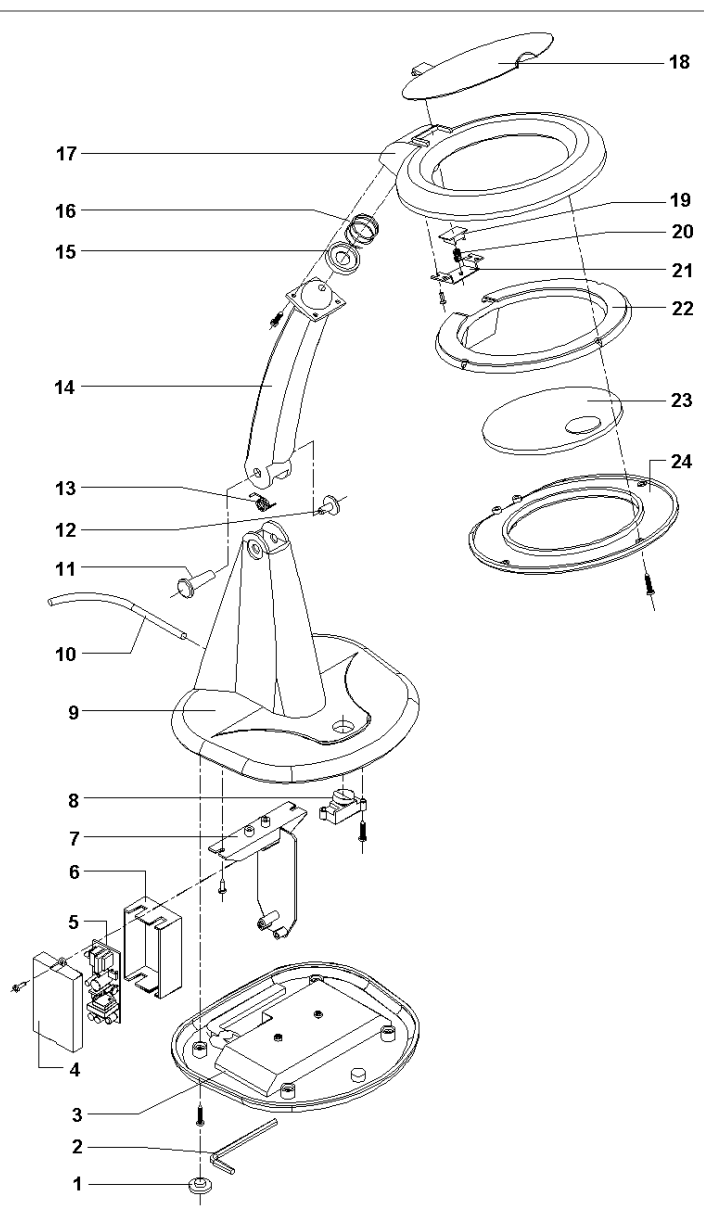


WIRING DIAGRAM



EXPLODED DRAWING AND SPARE PART LIST "SOLAR BENCH" LAMP

No.	CODE	DESCRIPTION
1	7003048	RUBBER FOOT
2	7003014	HEX KEY No.4
3	7003002	LOWER CLOSURE
4	7003008	TRANSFORMER BOX COVER
5	7003022N	ELECTRONIC BALLAST
6	7003007	TRANSFORMER BOX
7	7003006	TRANSFORMER SUPPORT
8	7002023	SWITCH
9	7003003	PLASTIC BASE
10	7003012	POWER CORD WITH PLUG
11	7003009	ROTATION PIN
12	7003010	CLUTCH ADJUSTMENT SCREW
13	7003011	CLUTCH SPRING
14	7003004	ARM WITH DOUBLE JOIN
15	7002027	SPRING GUIDE
16	7002028	SPRING ON THE JOINT
17	7003005	UPPER PLASTIC BODY
18	7003013	LENS PROTECTION CAP
19	7002032	GUIDE PLATE
20	7002031	SPRING
21	7002030	SPRING SUPPORT BRACKET
22	7003021N	COMPLETE LED RING for SOLAR BENCH
23	7003019	MAGNIFYING LENS (3 + 12 DIOPTERS)
24	7003015	TRANSPARENT LAMP PROTECTION SHIELD



DENTAFARM s.r.l.

Via Susa, 9/a - 10138 TORINO - ITALY

☎ TECHNICAL COMMERCIAL SERVICE (+39) 011/4346588

☎ AFTER-SALE TECHNICAL SERVICE (+39) 011/4346632

☎ FAX (+39) 011/ 4346366

E-mail: info@dentalfarm.it

Website: www.dentalfarm.it